

Davicom & AM Pattern Control

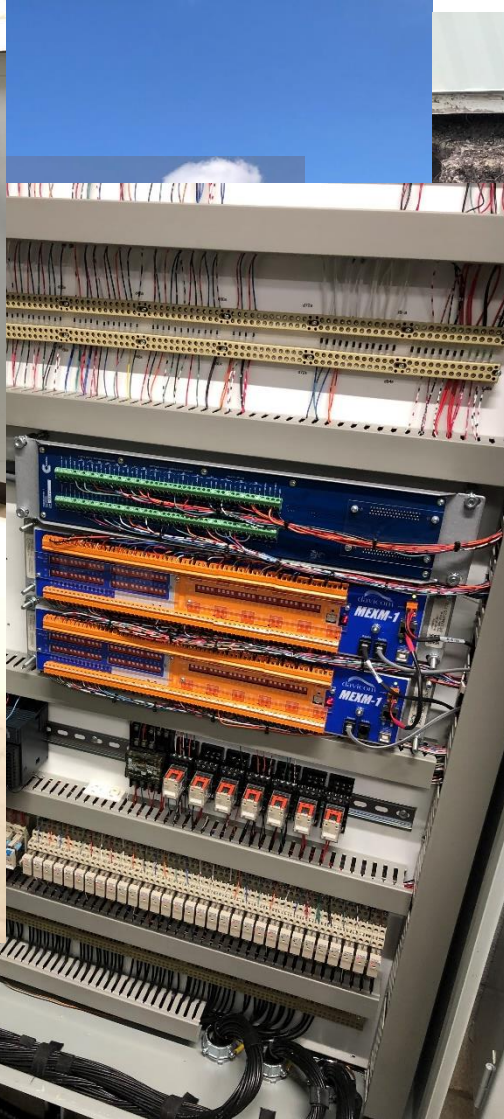


Who is G.S. Broadcast?

1. Equipment Reseller
2. Station maintenance
3. Systems Integrator

(Radio Studios, Radio and Television Transmitters)

AM Site Control



AM Site Control

1. Cortex 360
2. MEXM-1 Expansion Cards
3. Schneider TM221 PLC



System I/O

MEXM-1 I/O Board 2

| Metering | | Status In | | Command | |
|----------|-----------------------|-----------|------------------------------|---------|---------------------------|
| 2MA1 | TX B Forward Power | 2MD1 | TX B On-Air | 2MR1 | Select TX B On-Air |
| 2MA2 | TX B Reflected Power | 2MD2 | TX B RF On | 2MR2 | TX B RF On |
| 2MA3 | | 2MD3 | TX B Interlock Open | 2MR3 | TX B RF Off |
| 2MA4 | | 2MD4 | TX B PDM Inhibit | 2MR4 | TX B Reset |
| 2MA5 | | 2MD5 | TX B Cutback Alarm | 2MR5 | TX B Lower Power |
| 2MA6 | | 2MD6 | TX B SWR Shutback Alarm | 2MR6 | TX B Raise Power |
| 2MA7 | | 2MD7 | TX B AC Power OK | 2MR7 | |
| 2MA8 | | 2MD8 | TX B High B+ Alarm | 2MR8 | i-TX B Fault |
| 2MA9 | | 2MD9 | | 2MR9 | |
| 2MA10 | | 2MD10 | Fire System Fault | 2MR10 | |
| 2MA11 | Hut 1 Temperature | 2MD11 | Fire Alarm | 2MR11 | i-Davicom Progaming Local |
| 2MA12 | Hut 2 Temperature | 2MD12 | Hut(s) Door Open | 2MR12 | i-Call Out Disabled |
| 2MA13 | Hut 3 Temperature | 2MD13 | Tower Lights Fault | 2MR13 | i-Davicom Alarm |
| 2MA14 | Hut 4 Temperature | 2MD14 | Ventilation Fault (Pressure) | 2MR14 | Entry Pre-Warn Sono-Alert |
| 2MA15 | Ant Coax Line Presure | 2MD15 | Dehydrator Fault | 2MR15 | Building Entry Alarm |
| 2MA16 | Ant Coax Air Flow | 2MD16 | Day Pattern Active | 2MR16 | Select Day Pattern |
| 2MA17 | Tower 1 Ratio | 2MD17 | Night Pattern Active | 2MR17 | Select Night Pattern |
| 2MA18 | Tower 1 Phase | 2MD18 | NDA Pattern Active | 2MR18 | Select NDA Pattern |
| 2MA19 | Tower 2 Ratio | 2MD19 | Pattern Fault | 2MR19 | Pattern Fault Reset |
| 2MA20 | Tower 2 Phase | 2MD20 | PLC Manual Mode | 2MR20 | PLC Manual Mode On/Off |
| 2MA21 | Tower 3 Ratio | 2MD21 | Field RF Inhibit Active | 2MR21 | |
| 2MA22 | Tower 3 Phase | 2MD22 | PLC Not Running | 2MR22 | |
| 2MA23 | Tower 4 Ratio | 2MD23 | PLC Fault | 2MR23 | |
| 2MA24 | Tower 4 Phase | 2MD24 | Field 24VAC Fault | 2MR24 | |

AM antenna Systems



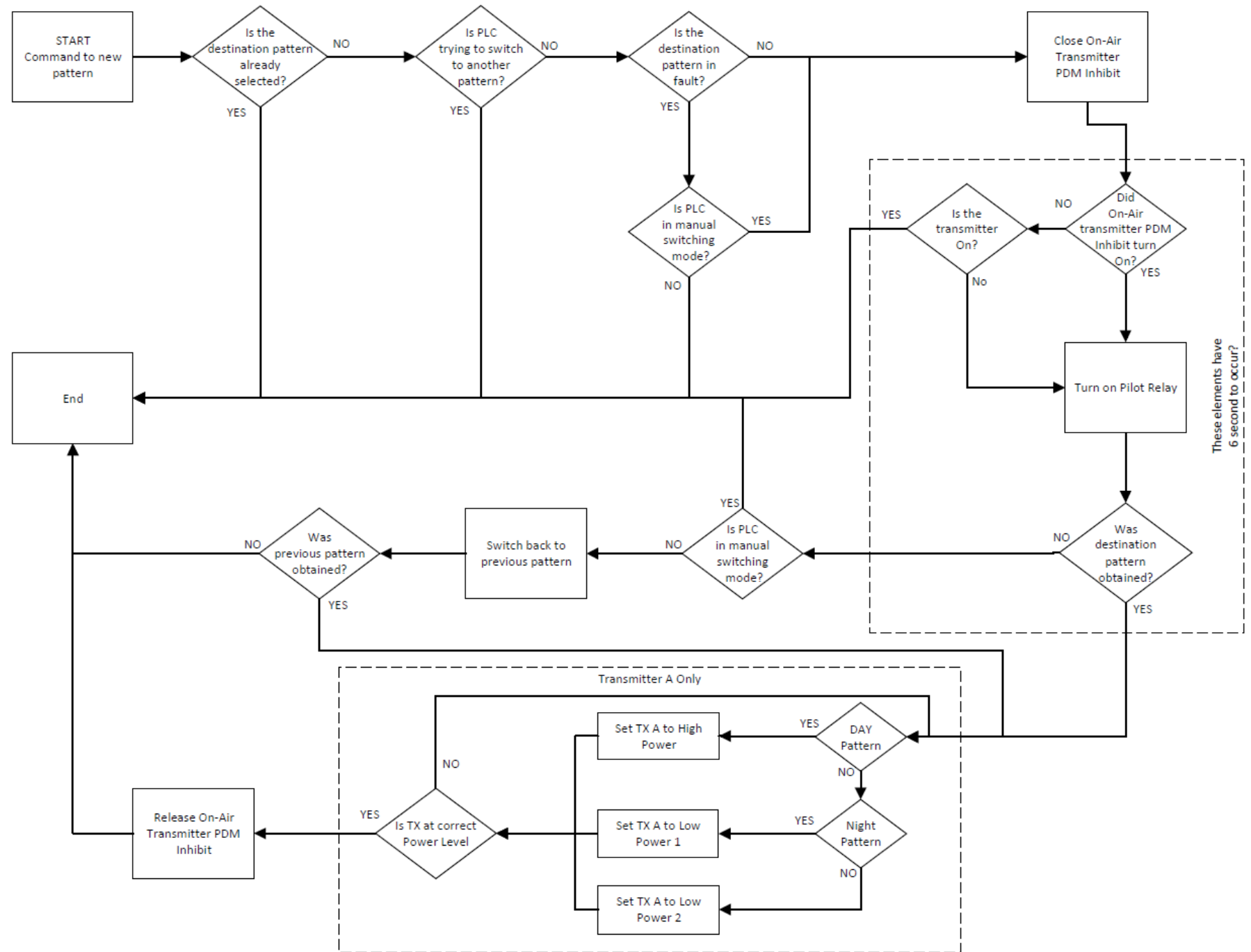
Pattern Switching

| | DESCRIPTION |
|------|-------------------------|
| 1H17 | January Night Pattern |
| 1H18 | February Day Pattern |
| 1H19 | March Night Pattern |
| 1H20 | April Night Pattern |
| 1H21 | May Night Pattern |
| 1H22 | June Night Pattern |
| 1H23 | July Night Pattern |
| 1H24 | August Night Pattern |
| 1H25 | September Night Pattern |
| 1H26 | October Night Pattern |
| 1H27 | November Night Pattern |
| 1H28 | December Night Pattern |

| | | | |
|------|---|------|---------------------------|
| 1V20 | Pattern Switching Enabled | 1O20 | Pattern Switching Enabled |
| 1V21 | Pulse to Day Pattern | 1O21 | Timer Day Pattern |
| 1V22 | ~Select Day Pattern | 1O22 | ~Day Pattern Pulse |
| 1V23 | ~Pulse to Night Pattern | 1O23 | |
| 1V24 | ~Select Night Pattern | 1O24 | ~Night Pattern Pulse |
| 1V25 | Set Day | 1O25 | |
| 1V26 | | 1O26 | |
| 1V27 | Day Pattern Called for but not selected | 1O27 | |
| 1V28 | Night Pattern Called for but not selected | 1O28 | |
| 1V29 | | 1O29 | |

| | | | |
|-------|-------------------------|-------|------------------------|
| 2MD17 | Night Pattern Active | 2MR17 | Select Night Pattern |
| 2MD18 | NDA Pattern Active | 2MR18 | Select NDA Pattern |
| 2MD19 | Pattern Fault | 2MR19 | Pattern Fault Reset |
| 2MD20 | PLC Manual Mode | 2MR20 | PLC Manual Mode On/Off |
| 2MD21 | Field RF Inhibit Active | 2MR21 | |

PLC Logic



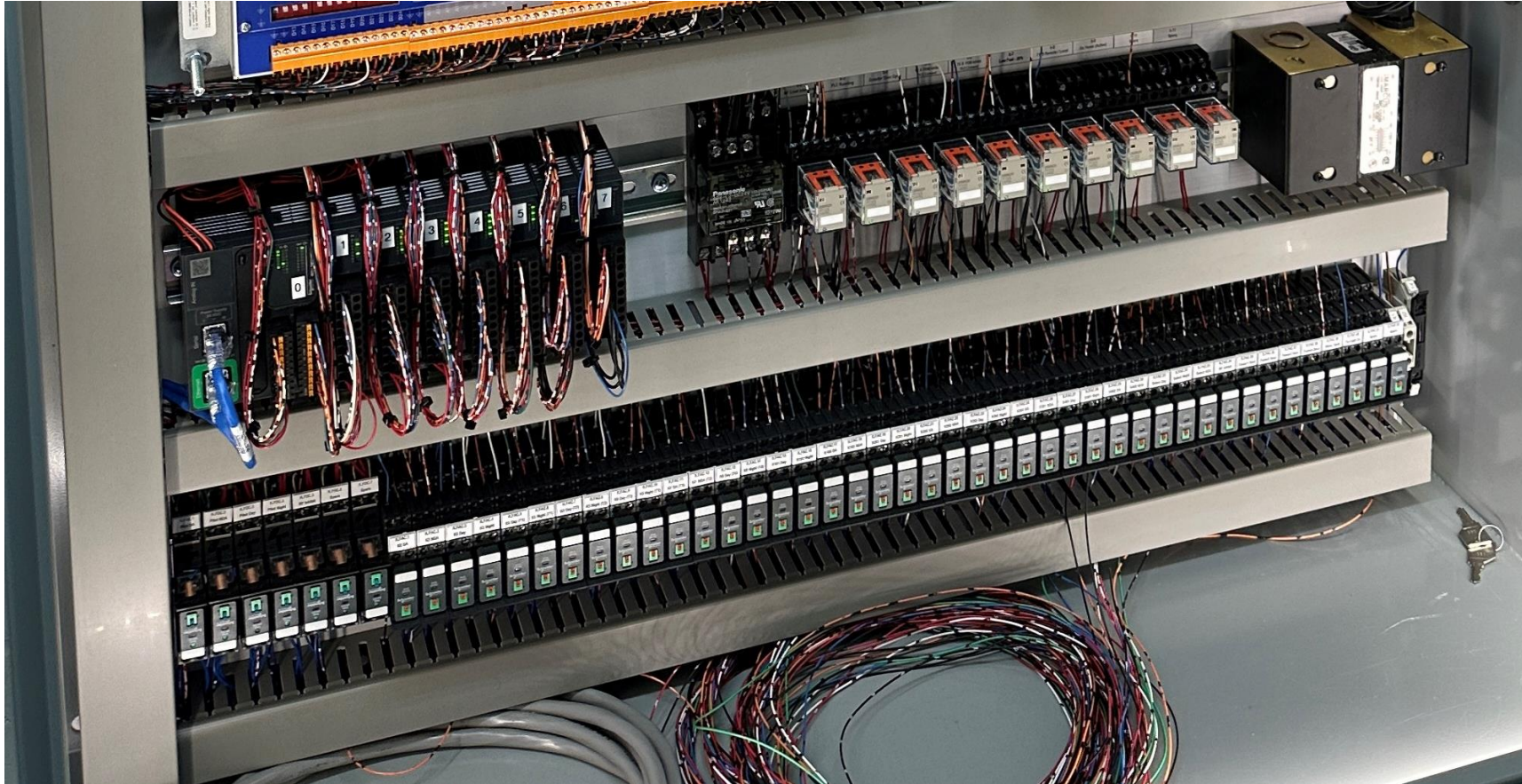
METERING INPUTS

| | VALUE | DESCRIPTION |
|-------|-----------|--------------------------------|
| 3MA1 | 61.20 ms | K1 Transfer Time to DA |
| 3MA2 | 124.40 ms | K1 Transfer Time to NDA3 |
| 3MA3 | 199.00 ms | K2 Transfer Time to Day |
| 3MA4 | 291.10 ms | K2 Transfer Time to Night |
| 3MA5 | 209.00 ms | K3 Transfer Time to Day |
| 3MA6 | 291.10 ms | K3 Transfer Time to Night |
| 3MA7 | 201.00 ms | K4 Transfer Time to Day |
| 3MA8 | 293.10 ms | K4 Transfer Time to Night |
| 3MA9 | 53.20 ms | K5 Transfer Time to DA |
| 3MA10 | 124.40 ms | K5 Transfer Time to NDA3 |
| 3MA11 | 197.00 ms | K101 Transfer Time to Day |
| 3MA12 | 309.10 ms | K101 Transfer Time to Night |
| 3MA13 | 235.10 ms | K102 Transfer Time to Day |
| 3MA14 | 285.10 ms | K102 Transfer Time to Night |
| 3MA15 | 52.40 ms | K103 Transfer Time to DA |
| 3MA16 | 124.40 ms | K103 Transfer Time to NDA3 |
| 3MA17 | 114.00 ms | K401 Transfer Time to Night |
| 3MA18 | 78.00 ms | K401 Transfer Time to Day/NDA3 |
| 3MA19 | -- | |
| 3MA20 | -- | |
| 3MA21 | -- | |
| 3MA22 | -- | |

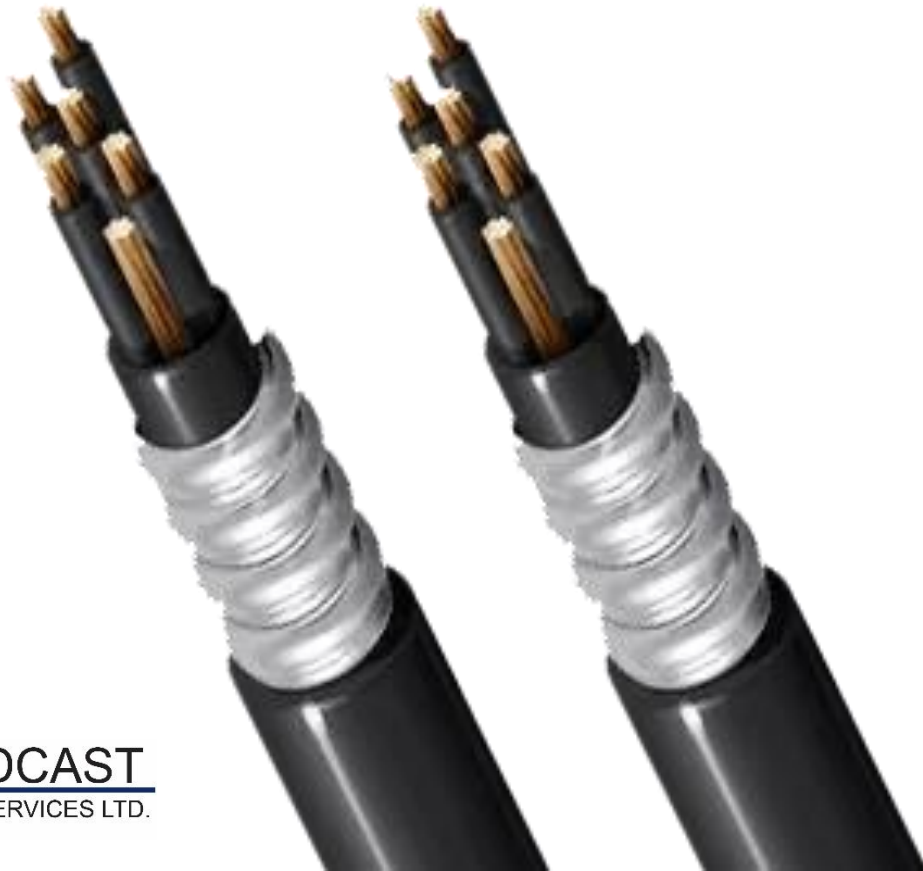
STATUS INPUTS

| | DESCRIPTION | ACT. TIMERS | |
|-------|------------------------------|-------------|-------|
| 3MD1 | Day Pattern Ok | 00:00:00 | 3MT1 |
| 3MD2 | Night Pattern Ok | 00:00:00 | 3MT2 |
| 3MD3 | OMNI/NDA3 Pattern Ok | 00:00:00 | 3MT3 |
| 3MD4 | K1 Ok | 00:00:00 | 3MT4 |
| 3MD5 | K2 Ok | 00:00:00 | 3MT5 |
| 3MD6 | K3 Ok | 00:00:00 | 3MT6 |
| 3MD7 | K4 Ok | 00:00:00 | 3MT7 |
| 3MD8 | K5 Ok | 00:00:00 | 3MT8 |
| 3MD9 | K101 Ok | 00:00:00 | 3MT9 |
| 3MD10 | K102 Ok | 00:00:00 | 3MT10 |
| 3MD11 | K103 Ok | 00:00:00 | 3MT11 |
| 3MD12 | K401 Ok | 00:00:00 | 3MT12 |
| 3MD13 | | -- | 3MT13 |
| 3MD14 | | -- | 3MT14 |
| 3MD15 | PLC PDM Inhibit Not Active | 00:00:00 | 3MT15 |
| 3MD16 | Shutdown From CBC Not Active | 00:00:00 | 3MT16 |
| 3MD17 | NDA1 Not Active | 00:00:00 | 3MT17 |
| 3MD18 | PLC I/O Not Forced | 00:00:00 | 3MT18 |
| 3MD19 | PLC I/O Com Ok | 00:00:00 | 3MT19 |
| 3MD20 | Field RF Inhibit Not Active | 00:00:00 | 3MT20 |
| 3MD21 | PLC Battery Ok | 00:00:00 | 3MT21 |
| 3MD22 | Phasor Building Door Closed | 00:00:00 | 3MT22 |

Isolation



Field Cables



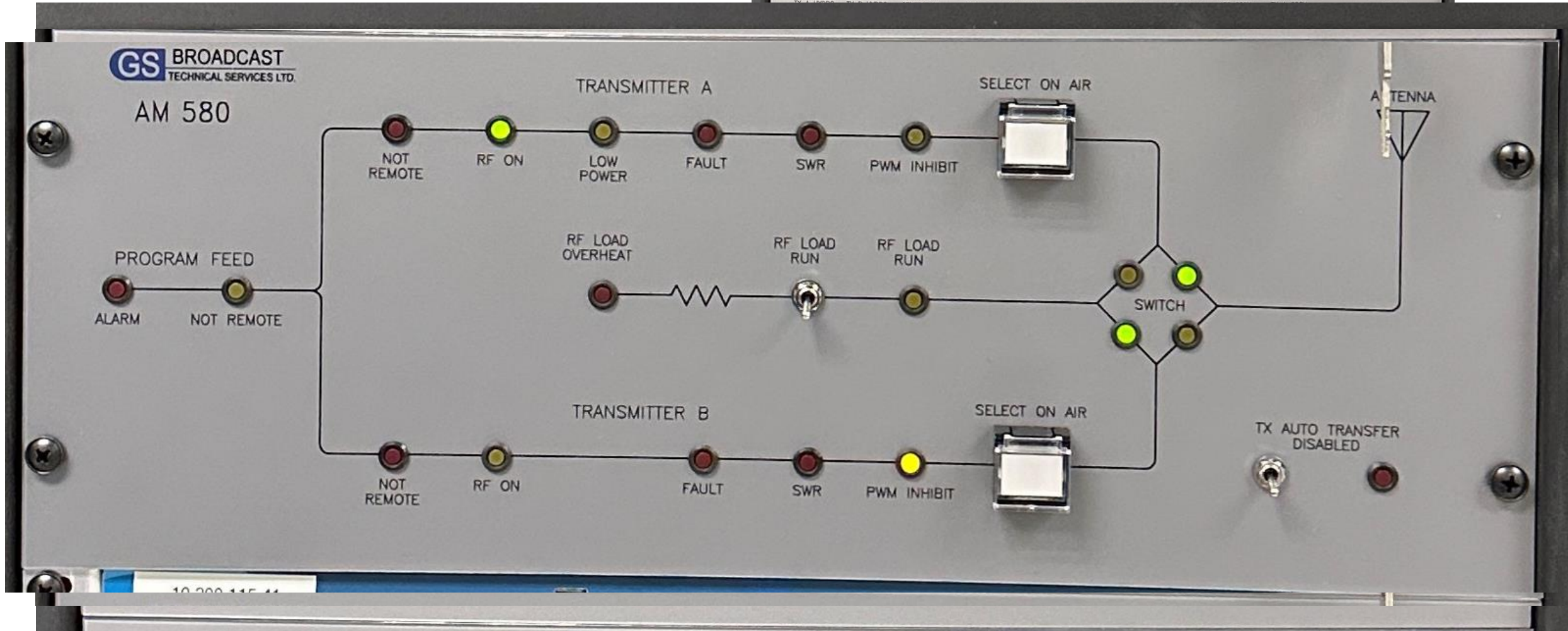
Temperature Sensors



Site Commissioning



Mimic Panels



Questions

Thank you!!

Richard Sondermeyer

richard.sondermeyer@gsbts.com

905-814-7902

www.gsbts.com (equipment resale, projects & maintenance)

Twitter: @gsbroadcasttech