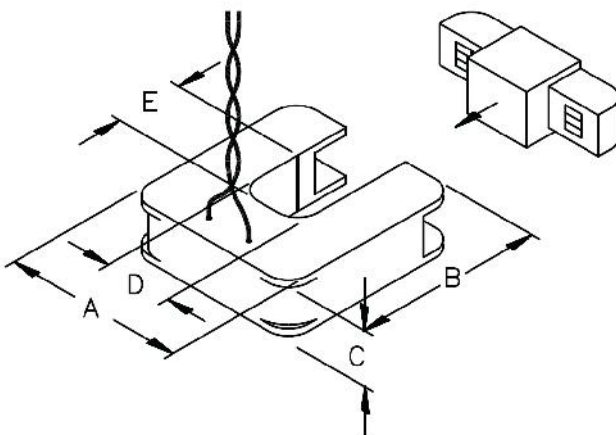


Split Core Current Transformer • SCCT-1

The SCCT series of split core transformers can be installed without disconnecting the circuit being measured thus making installation easier and safer. They have a standard 333 mV AC output and the epoxy encapsulated housing insures stability and long term performance. Models are available for 50A (SCCT-1 /50), 250A (SCCT-1 /250) and 1500A (SCCT-1 /1500) measuring ranges. 8ft-leads are provided with the /250 and /1500 models and 3ft-leads are provided with the /50 model.



ELECTRICAL SPECIFICATIONS	
Output:	333 mV AC
Accuracy:	0.5% (250A model) 1.0% (50A and 1500A models) from 10% to 130% of rated current
Phase angle:	<2° for all models

DIMENSIONS			
Size	SCCT-1 /50	SCCT-1 /250	SCCT-1 /1500
A	2.00 (50.8)	3.25 (64.5)	4.75 (121)
B	2.00 (50.8)	3.35 (85.1)	5.00 (127)
C	0.75 (19.1)	1 (25.4)	1.20 (30.5)
D	0.70 (17.8)	1.25 (3.2)	2.00 (50.8)
E	0.70 (17.8)	1.25 (3.2)	2.00 (50.8)

Inches (mm)



RISK OF ELECTRICAL SHOCK AND DEATH

INSTALLATION MUST BE CARRIED OUT BY QUALIFIED PERSONNEL